

An aerial photograph of the Orinoko Zoo in Minsk, Belarus. The central focus is a large, circular glass and steel structure, likely a conservatory or greenhouse, which is currently under construction. The building's framework is visible, with red steel beams and glass panels. The structure is surrounded by a paved area and greenery. In the background, there are residential buildings and a dense forest. The sky is clear and blue.

Экзотариум "Ориноко"

г. Минск





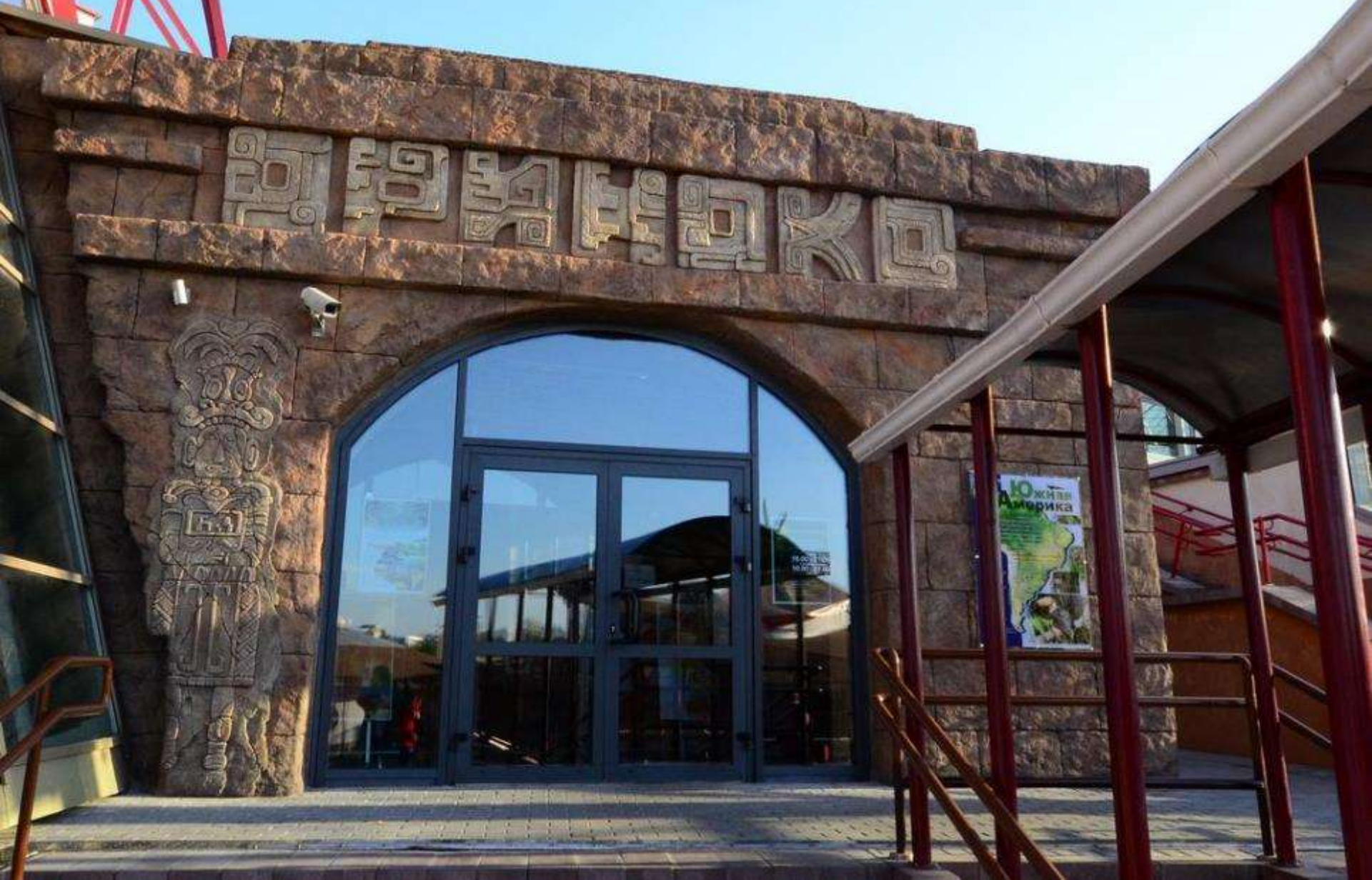
Общая
площадь -
4000 кв.м

Общий вид Экзотариума





Центральный вход в Экзотариум







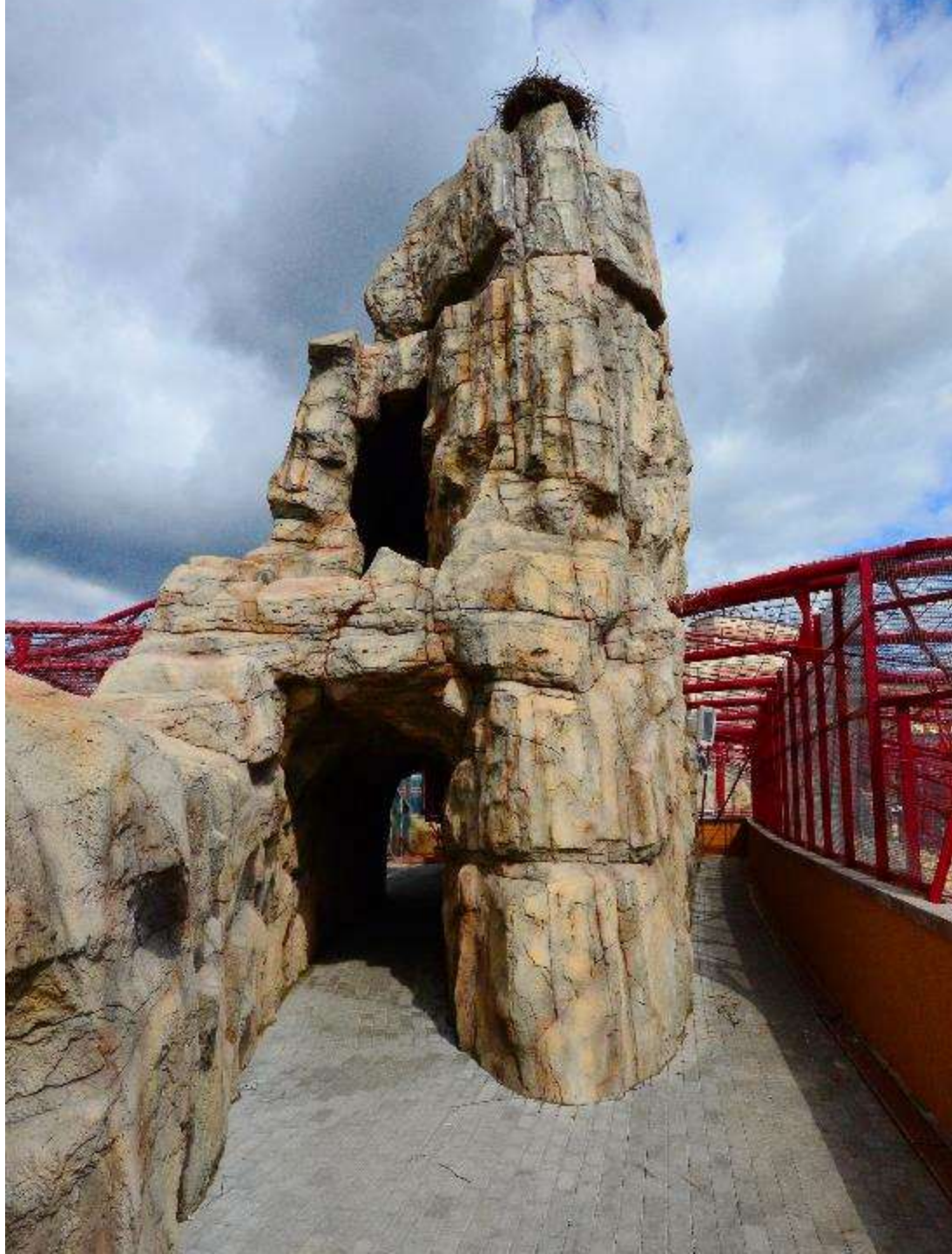










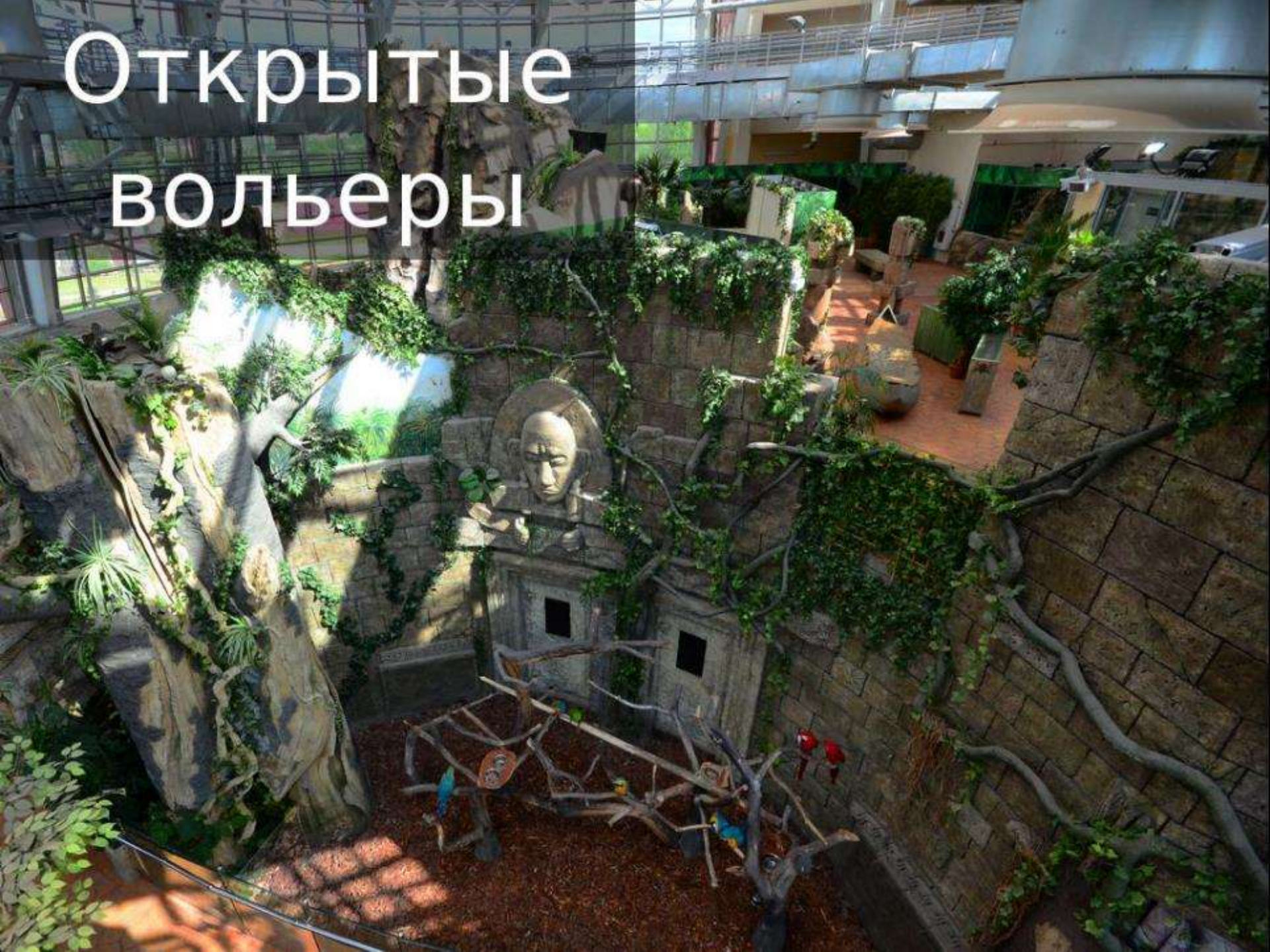






Внутренняя площадь
экспозиции - 2,5 тыс.
кв.м

Открытые вольеры

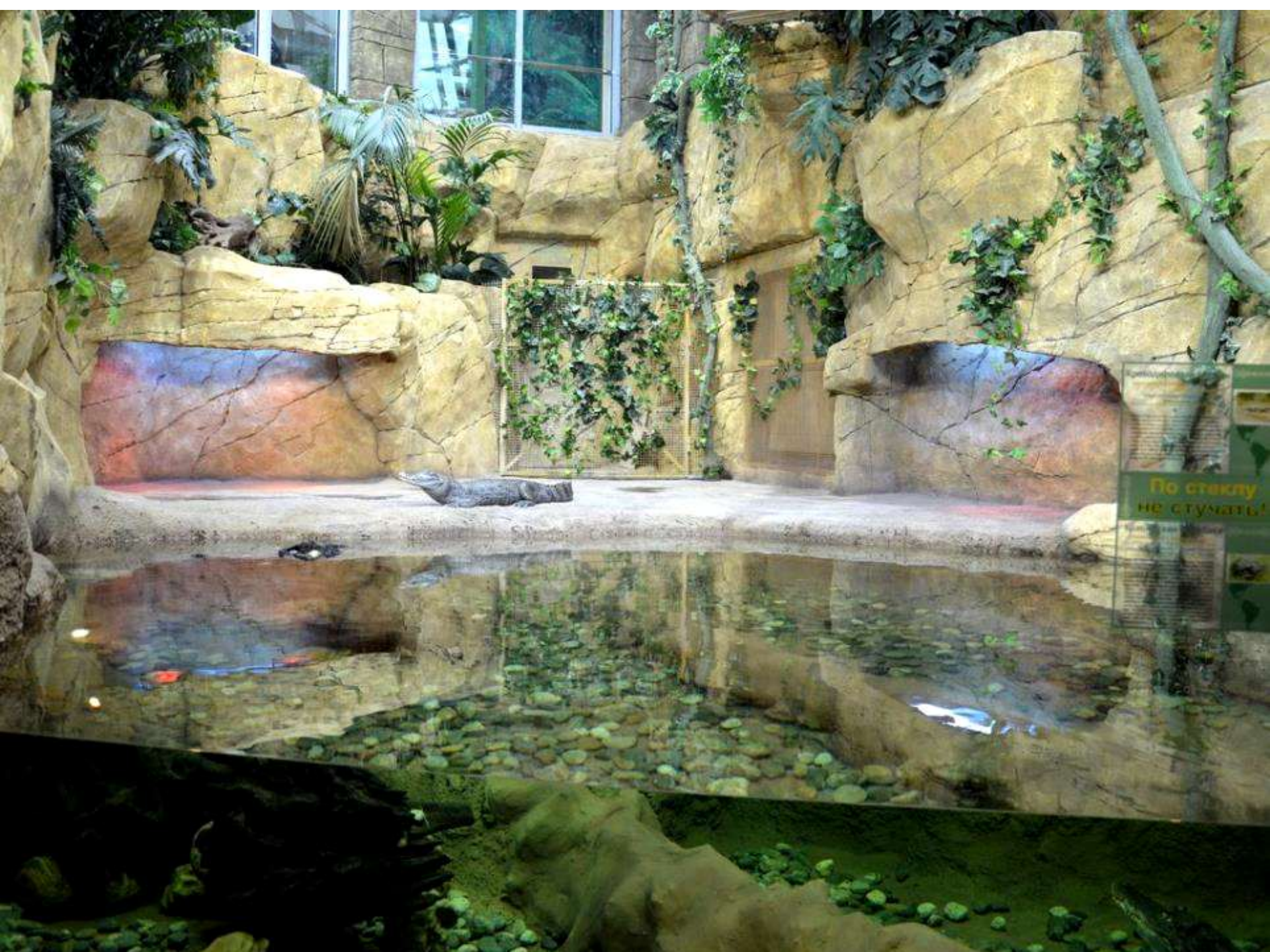




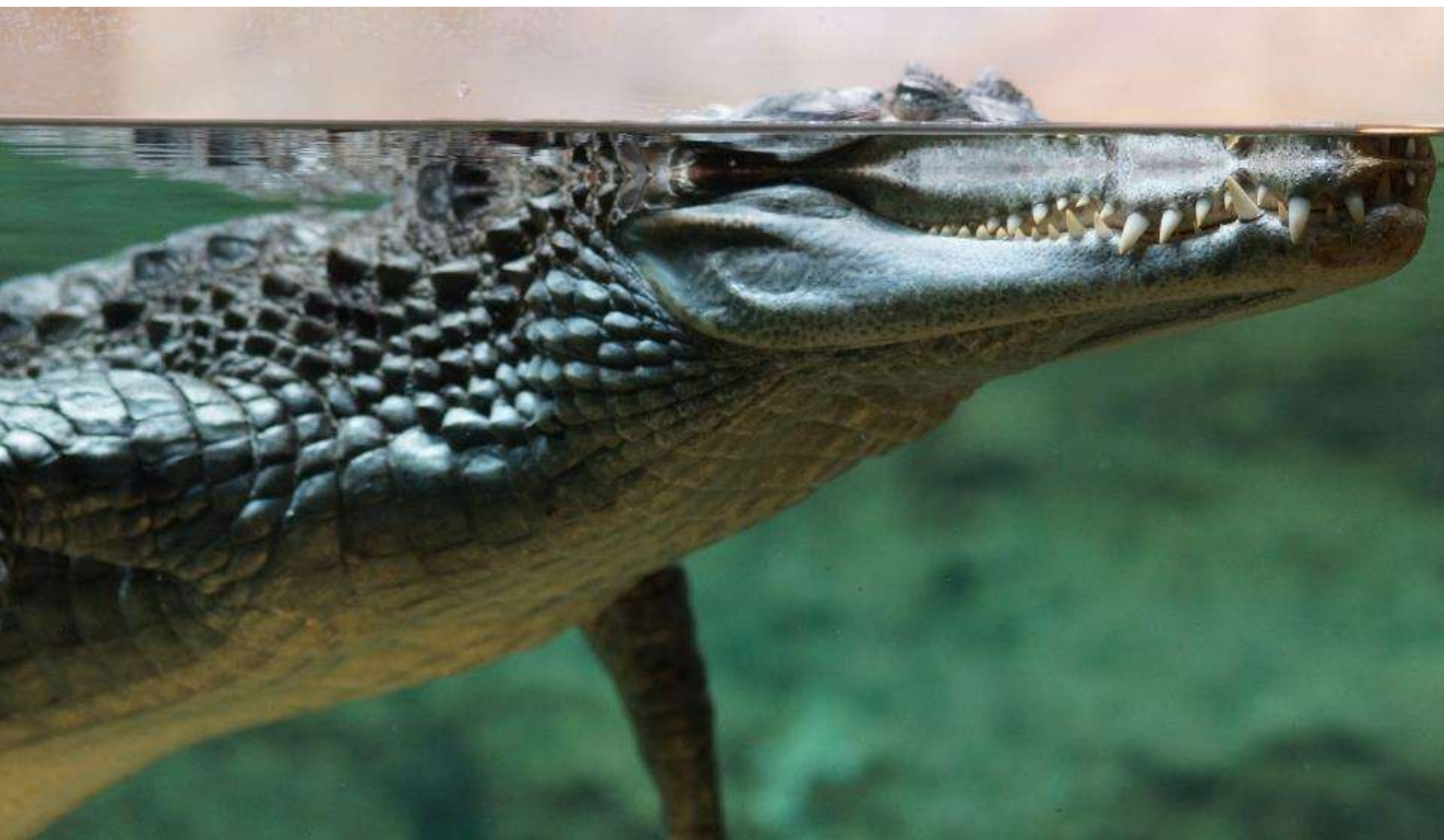








По стеклу
не стучать!





Аквариум -
60 тн.



























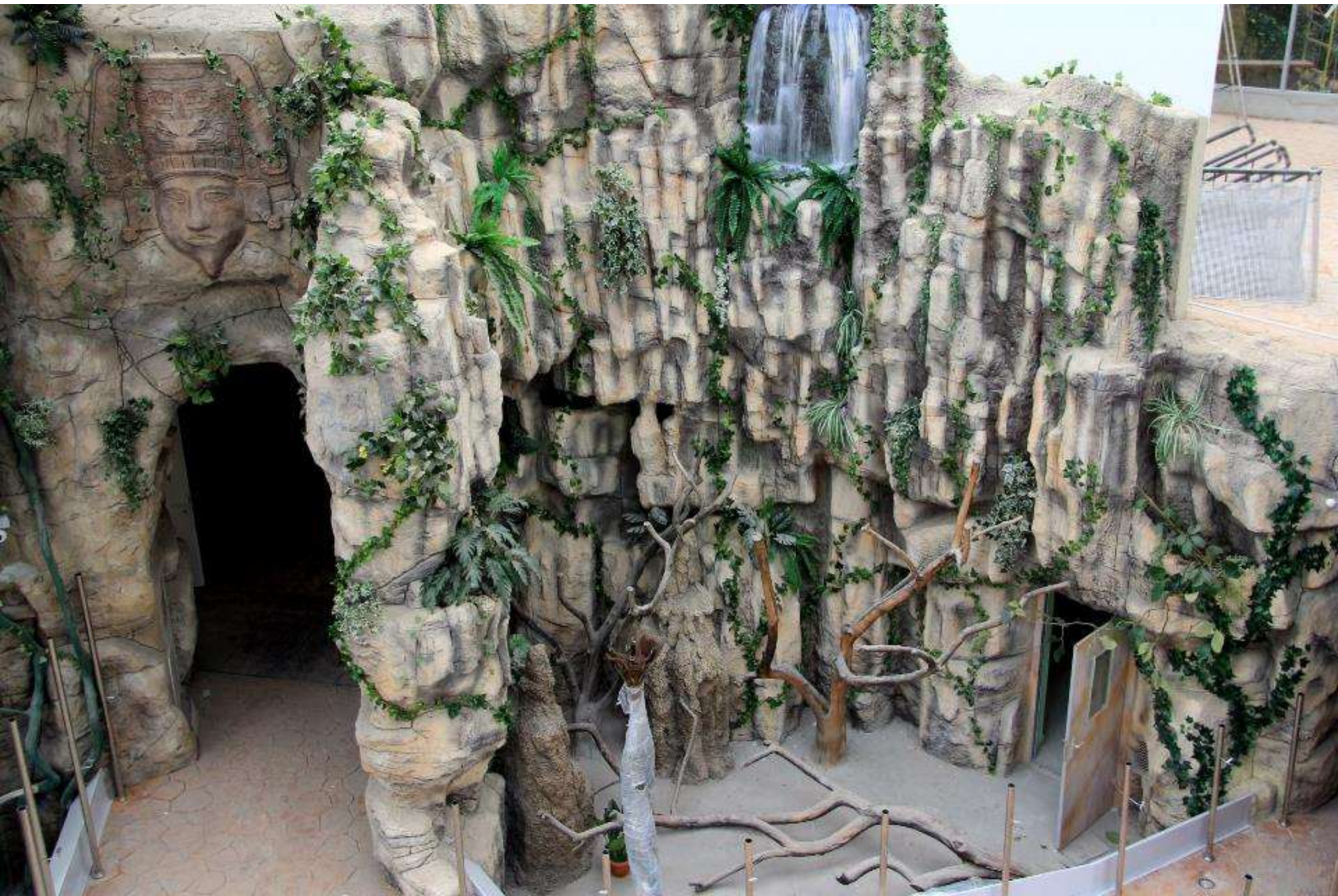
























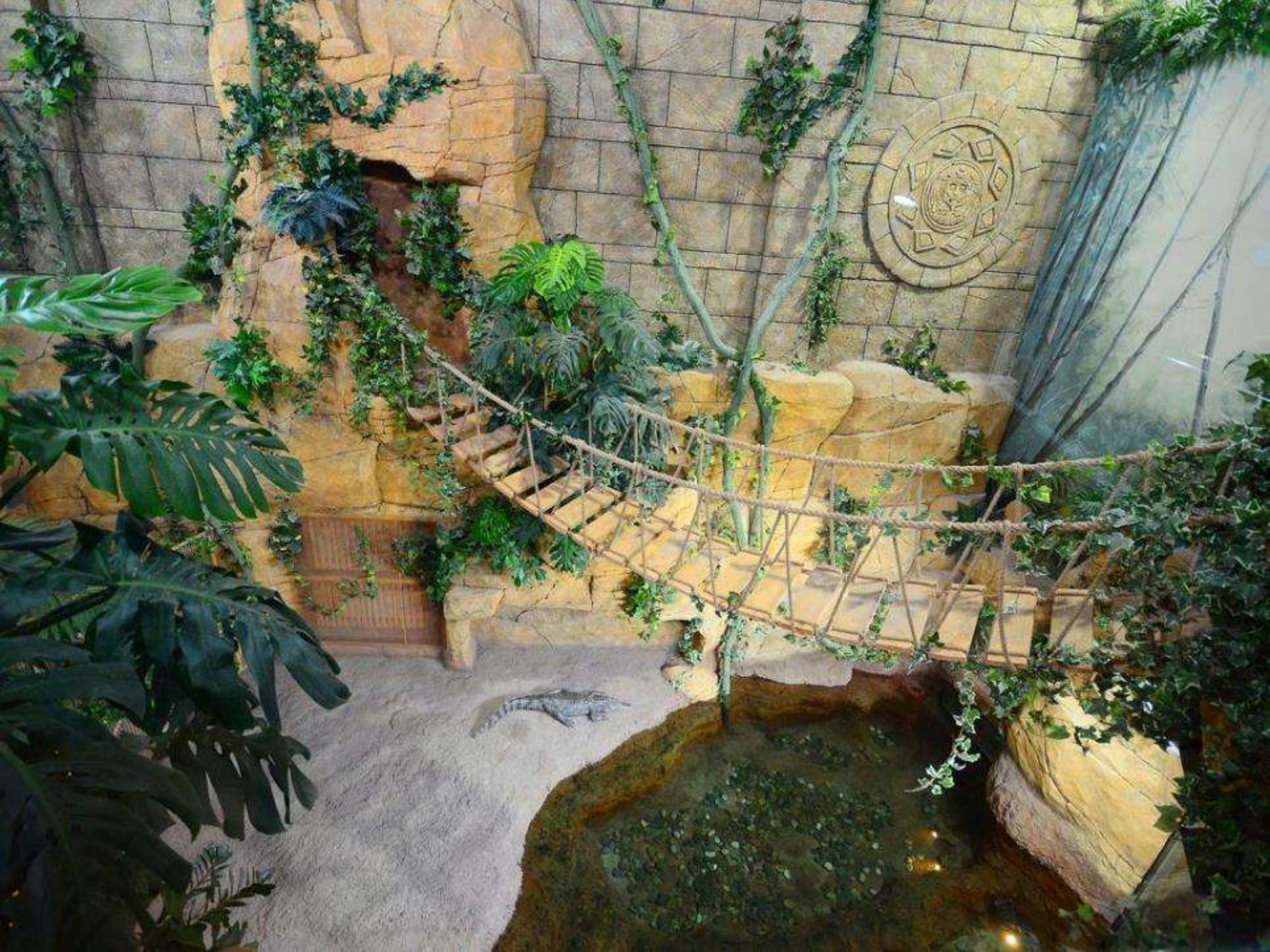
























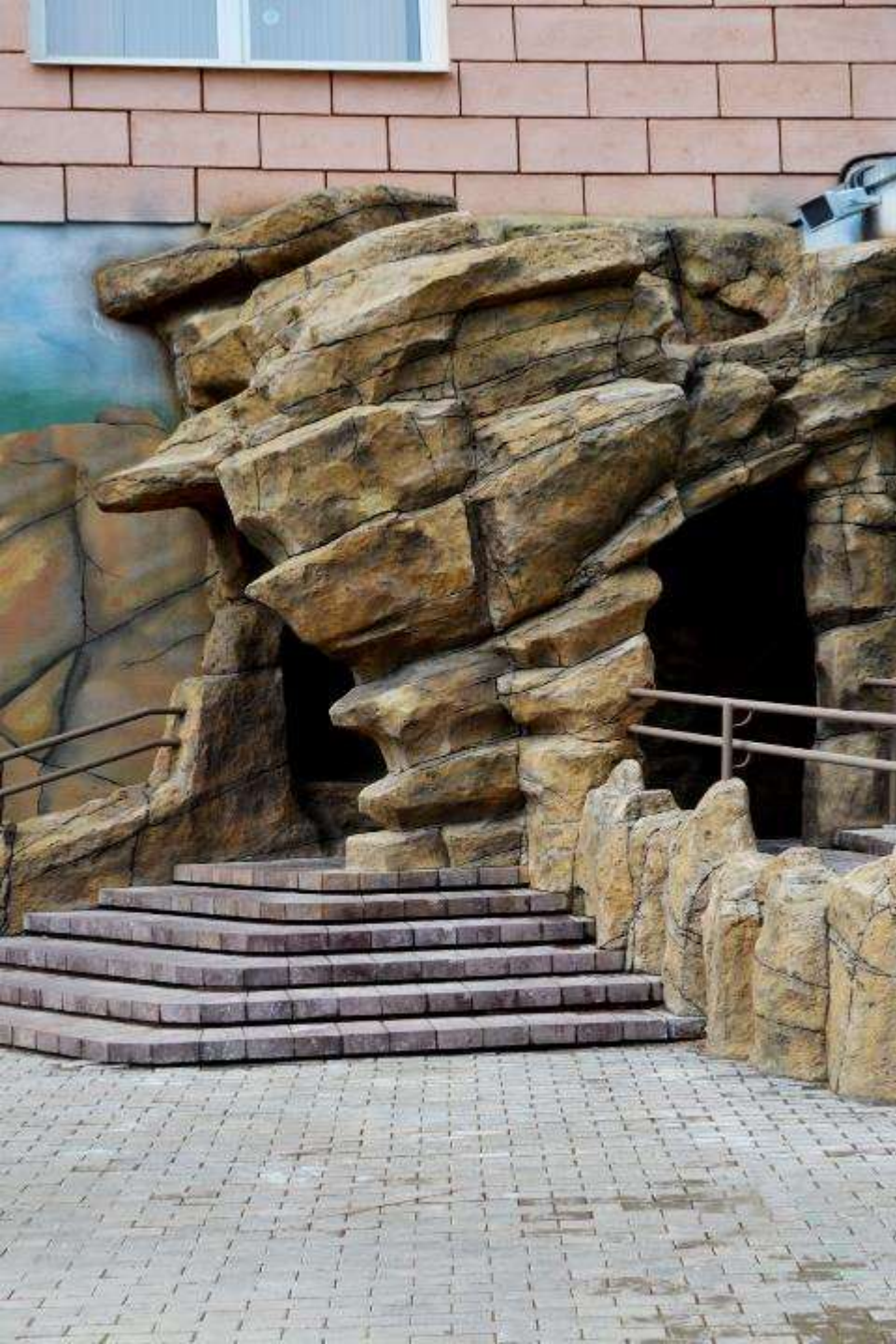




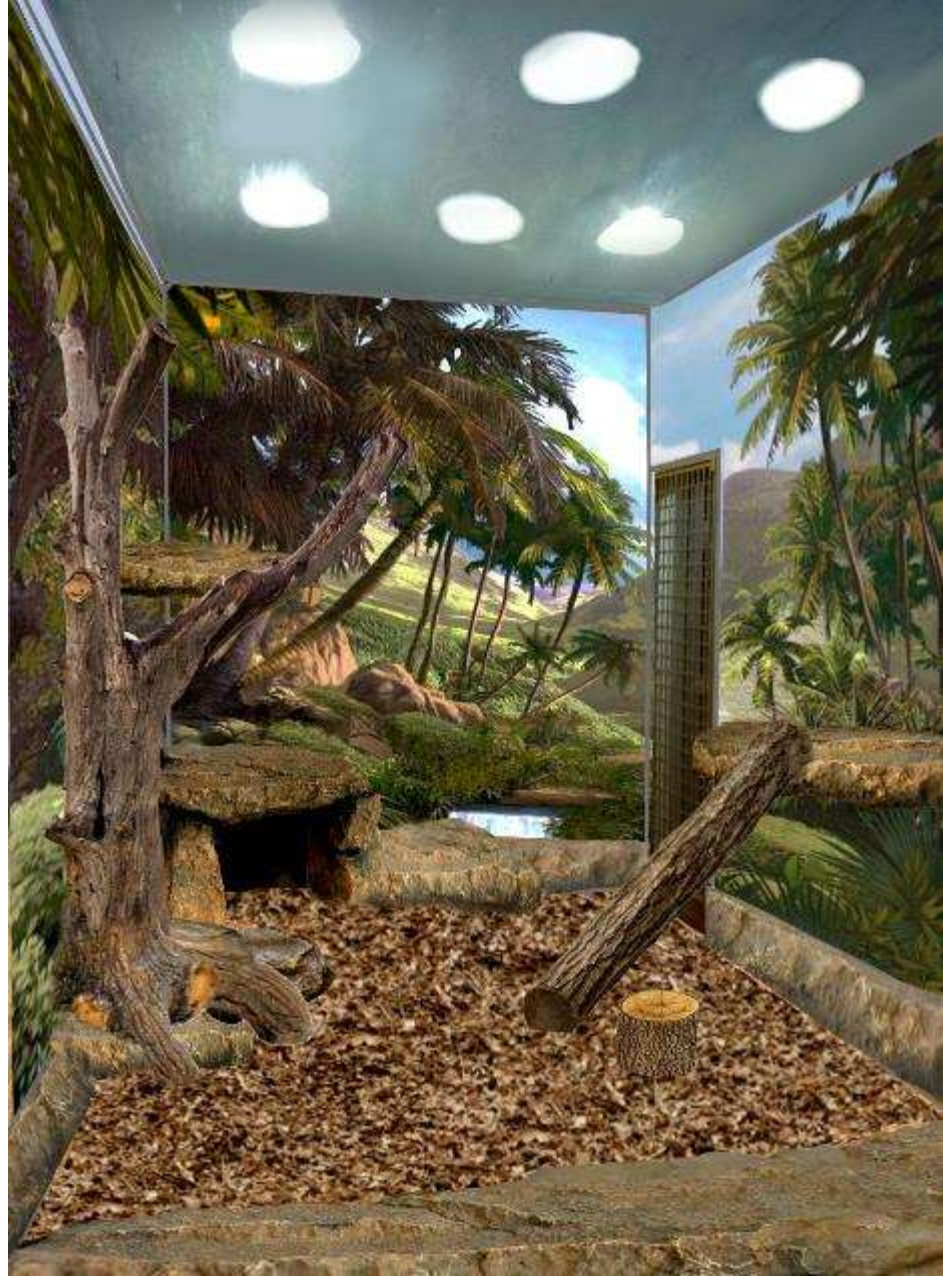
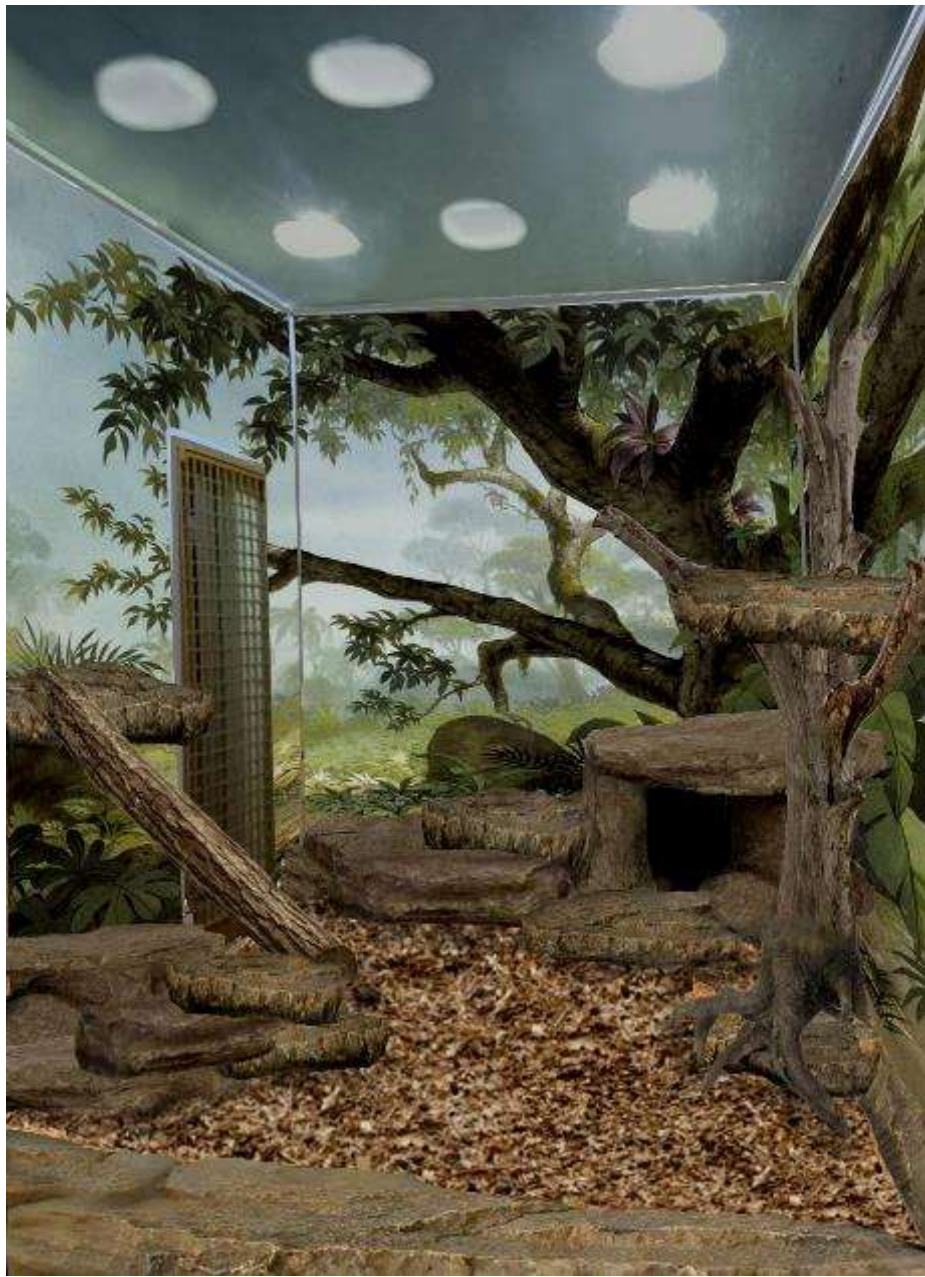




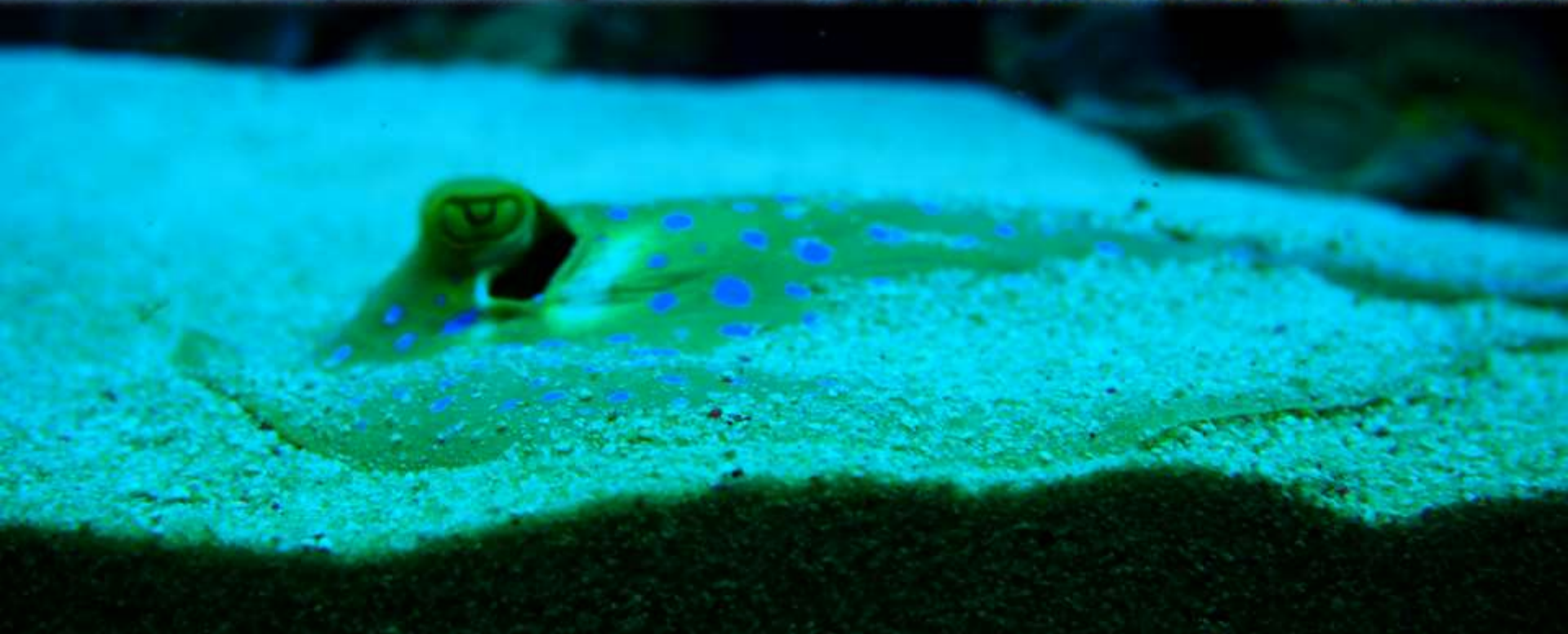
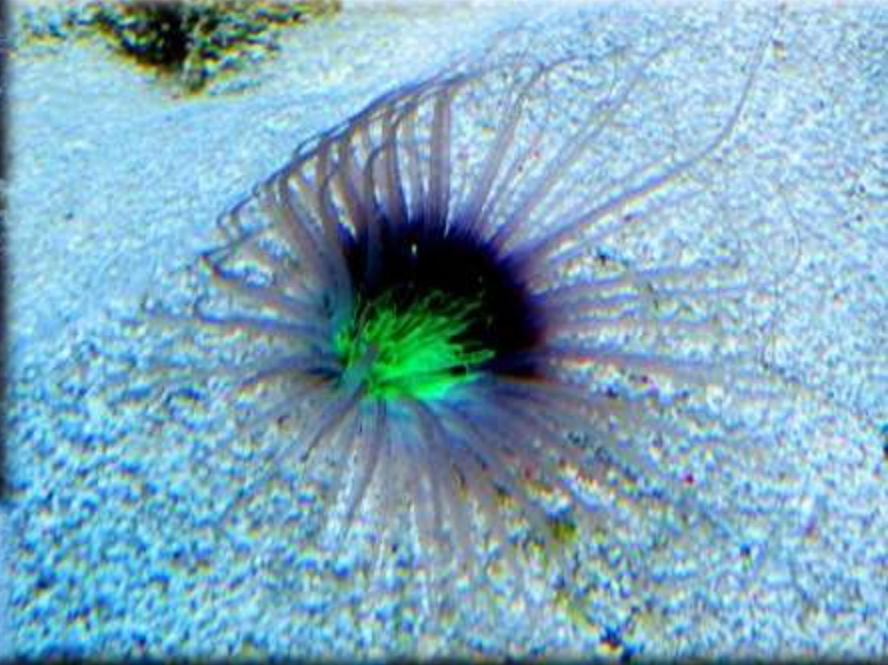


























МОСБИО
ИНЖИНИРИНГ



МИНСКИЙ
ЗООПАРК

Спасибо за внимание!

Швечков В.В.

Рябов Ю.В.